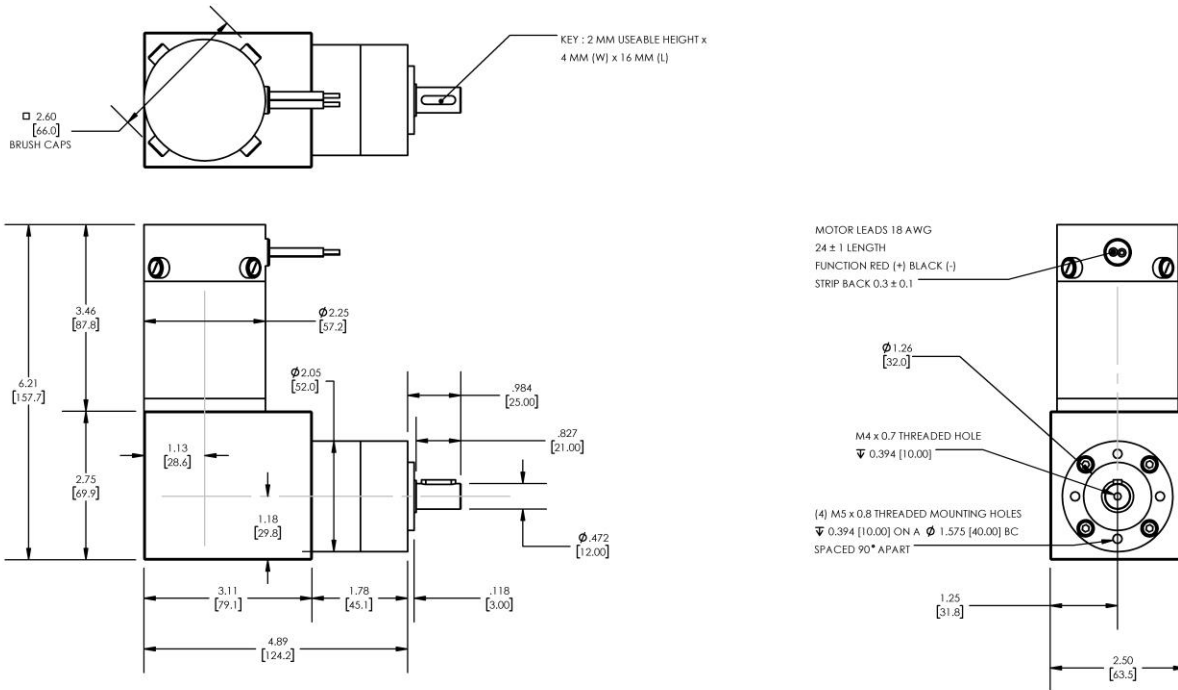




REVERSIBLE BRUSHED DC RIGHT-ANGLED GEARMOTOR

Model Number:

MMP S22-346K-48V GRA52-03.7



PLANETARY GEARMOTOR OUTPUT PARAMETERS:	VALUE	UNITS	TOLERANCE
Gearhead Ratio (exact)	3.70 : 1		
Gearhead Shaft Output Speed (at full-load)	609	RPM	MAX
Gearmotor Rated Continuous Torque	11	In-Lbs	MAX
Gearmotor Rated Peak Torque	28++	In-Lbs	----
Gearhead Standard Backlash	42	Arc Minutes	MAX
Gearhead Efficiency	80%	----	----
Output Shaft Radial Load Capacity	45	Lbs	MAX
Output Shaft Axial Load Capacity	14	Lbs	MAX
Gearmotor Total Weight	5.2	Lbs	MAX

++ All Peak Torque values are dependent upon duty. Contact our sales office for details.

DC MOTOR PERFORMANCE PARAMETERS:	VALUE	UNITS	TOLERANCE
Rated DC Voltage	48	DC VOLTS	----
Rated Continuous Current	3.4	AMPERES	----
No-Load Speed	3221	RPM	MAX
Rated Speed	2253	RPM	+/- 15%
Rated Continuous Power Out	101	WATTS	+/- 15%
Rated Continuous Torque	60	OZ-IN	----
Peak Torque (motor only)	153	OZ-IN	----
No-Load Current	0.42	AMPERES	MAX
Back EMF Constant (Ke)	14.9	V/KRPM	+/- 10%
Torque Constant (Kt)	20.1	OZ-IN/AMP	+/- 10%
DC Armature Resistance	4.21	OHMS	+/- 15%
Armature Inductance	1.38	mH	+/- 15%
Armature temperature	155	DEG. C	MAX

NOTES:

- ENCODER & BRAKE OPTIONS AVAILABLE – [FOLLOW THIS LINK FOR DETAILS](#)
- NEMA MOUNTING FLANGE OPTION AVAILABLE – [FOLLOW THIS LINK FOR DETAILS](#)

MIDWEST MOTION PRODUCTS, INC

DESIGN, MANUFACTURING & DISTRIBUTION - MOTION CONTROL EQUIPMENT

www.midwestmotion.com

email: sales@midwestmotion.com